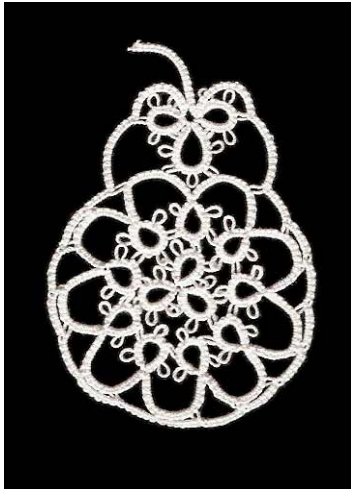


Be-stitched

Fine tating supplies

www.be-stitched.com
www.be-stitchedstore.com

Tatted whatever-it-is



I'm not even sure what this is. I had planned on designing a pear (who knows why), and came up with this. It doesn't quite look like a pear to me, so I showed it to my husband. He said "What is that?" Then I realized it looked like a Christmas ornament or one of the bombs in the Bugs Bunny cartoons.



I took it upstairs to my son, and he thought it was a crazed snowman because he saw the top clover leaf as eyes and a wide-open mouth. Then I looked at it again, and saw the back of a fat cat, if you take the stem off the top.

At any rate, whatever this is, I hope you find a use for it! I've decided I like the cat myself.

This pattern is beginner level and uses one shuttle. I used size 30 DMC Cebelia thread in white.

You will need:

Thread in your choice of color and size.
1 tating shuttle

ds double stitch R ring p picot
j join lj lock join

Instructions:

Round 1: Body center
Start at **RED** ring on visual diagram

R: (3ds p) 5 times, close
Repeat twice more, cut and tie.

Round 2: Body
Start at **GREEN** ring on visual diagram

R: (3ds p) 2 times, 3ds j to center p of any R in previous round, (3ds p) 2 times, 3ds, close, turn
%*Ch: (6ds p) 2 times, 6ds, turn

R: 3ds p 3ds j to 4th p of previous R, (3ds p) 3 times, 3ds, close, turn*
Repeat between * once more.

Ch: (6ds p) 2 times, 6ds, turn

R: 3ds p 3ds j to 4th p of previous R, 3ds j to center p of next R in previous round, (3ds p) 2 times, 3ds, close, turn%

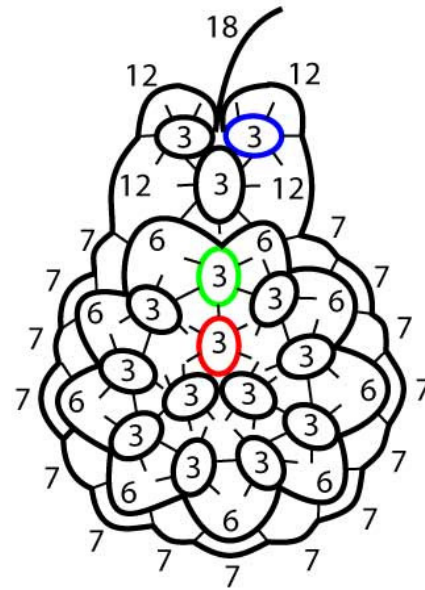
Repeat between % once more.

Repeat between * once more.

Ch: (6ds p) 2 times, 6ds, turn
 R: 3ds p 3ds j to 4th p of previous R, 3ds p 3ds j to 2nd p of first R in this round, 3ds p 3ds, close, turn
 Ch: (6ds p) 2 times, 6ds
 Cut and tie.

Round 3: Head and outer body
 Start at **BLUE** ring on visual diagram

R: (3ds p) 5 times, 3ds, close
 R: 3ds j to last p of previous R, 3ds p 3ds j to second p of any Ch on previous round, 3ds p 3ds, j to first p of adjacent Ch, (3ds p) 2 times, 3ds close
 R: 3ds j to last p of previous R, (3ds p) 4 times, 3ds close, turn
 Ch: 12ds lj to center p of first R of this round
 Ch: 12ds lj to closest p on Ch of previous round
 Ch: 7ds lj to next p on previous round
 Repeat between ** around
 Ch: 12ds lj to center p of last R of this round
 Ch: 12ds lj to base of clover leaf
 Ch: 18ds (leave this off for cat or snowman)
 Cut and tie.



© Copyright 2008 by Nancy Tracy, All Rights Reserved. This pattern is for personal use. Please do not resell this pattern or post it on the internet. You may tat this design, sell the tatted pieces, and post photos or scans of the tatted pieces on the internet. If you post your completed tatting, please include a link to Be-stitched. Pattern originally found at Be-stitched: <http://www.be-stitched.com>